



Dialogue For Health

Public Health Successes in Rhode Island

Nicole Alexander-Scott, MD, MPH

Director, Rhode Island Department of Health

Health Equity Zones



- Nine local collaboratives across Rhode Island.
- Geographic areas with measurable health disparities, and socioeconomic and environmental conditions that keep people from being as healthy as possible.
- **Braided funding drives collective action with authentic community engagement.**
 - Initial seed funding supports local collaboratives to conduct needs assessments and implement action plans.
 - Includes municipal leaders, residents, businesses, transportation and community planners, law enforcement, education systems and health systems, among others.

Health Equity Zones



- Improve health of communities with high rates of illness, injury, chronic disease, or other adverse health outcomes
- Improve birth outcomes
- Create economic and employment opportunities
- Improve the social and environmental conditions of the neighborhood
- Support policy change / environmental health policies



Health Equity Zones



City of Providence, Healthy Communities Office

Focus on tobacco-free environments, access to healthy food and beverages, and access to physical activity and safe walking.



Health Equity Zones



Woonsocket, Thundermist Health Associates

Focus on substance abuse, trauma, and teen pregnancy

Pawtucket and Central Falls, Local Initiatives Support Corporation

Focus on housing, access to healthcare and mental health services, job readiness, transportation, parks and libraries, education, and child care.



More information: www.health.ri.gov/hez

Community Health Workers



- Hired for their understanding of the populations they serve (rather than just from expertise due to formal education).
- Examples of Community Health Workers include:
 - Chronic disease case managers
 - Substance use disorder peer recovery coaches
 - Bi-lingual health systems navigators
 - Public Housing Resident Coordinators

ROI with CHWs in Rhode Island



Home Asthma Response Program

- After a child visits the ED for asthma, three home visits assess home environment, remove/mitigate triggers, educate caregivers on medications and environmental control options.
- Certified Asthma Educators and CHWs ensure caregiver understands how to obtain and use medications and/or devices, thus enhancing compliance with physician Asthma Action Plan.
- For families who don't have an Action Plan, the Asthma Educator does outreach to get one from the primary care provider and reviews it with the caregiver.

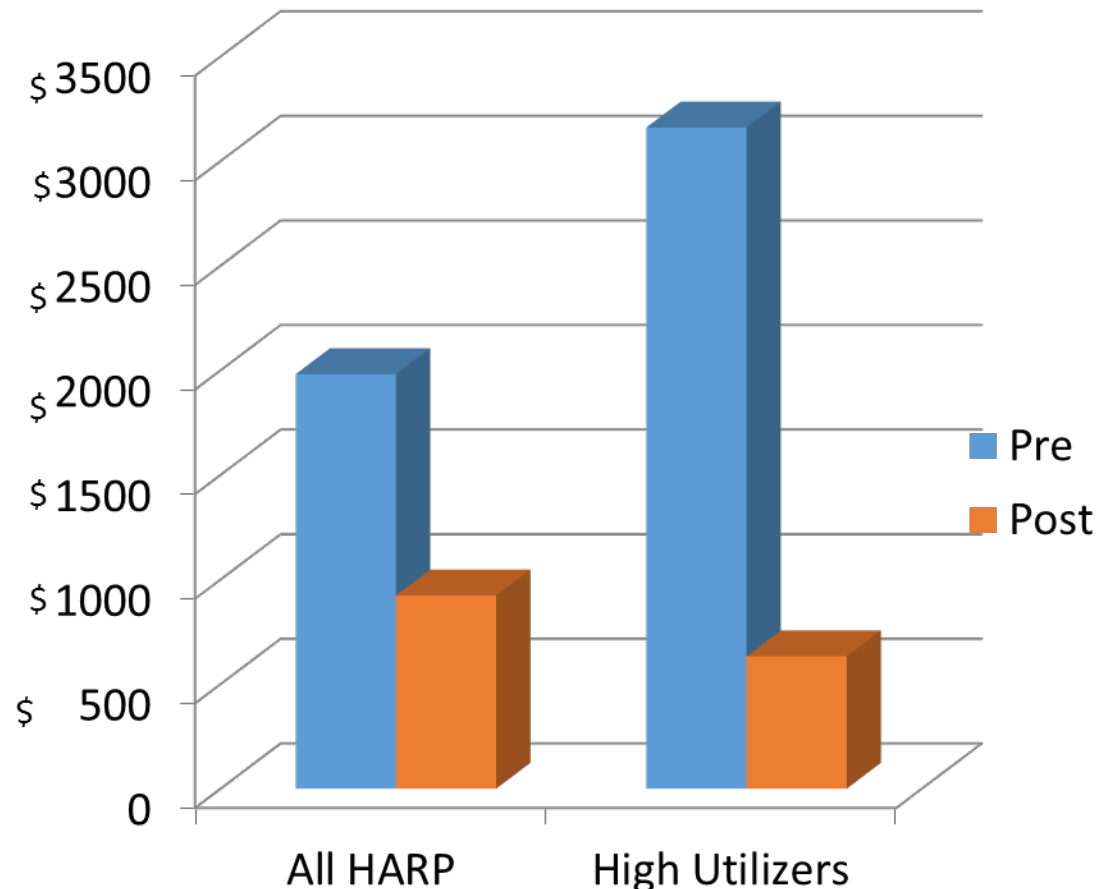


ROI with CHWs in Rhode Island



- **53.4%**
reduction in
overall costs
- **80%**
reduction in
costs for high
utilizers
- **92%**
reduction in
asthma-
related
hospital and
ED costs

Received actual claims from three insurers for HARP Year 2 (N=41 eligible cases with claims for analysis)



Transforming Practices with CHWs



Rhode Island SIM Healthcare Transformation Project

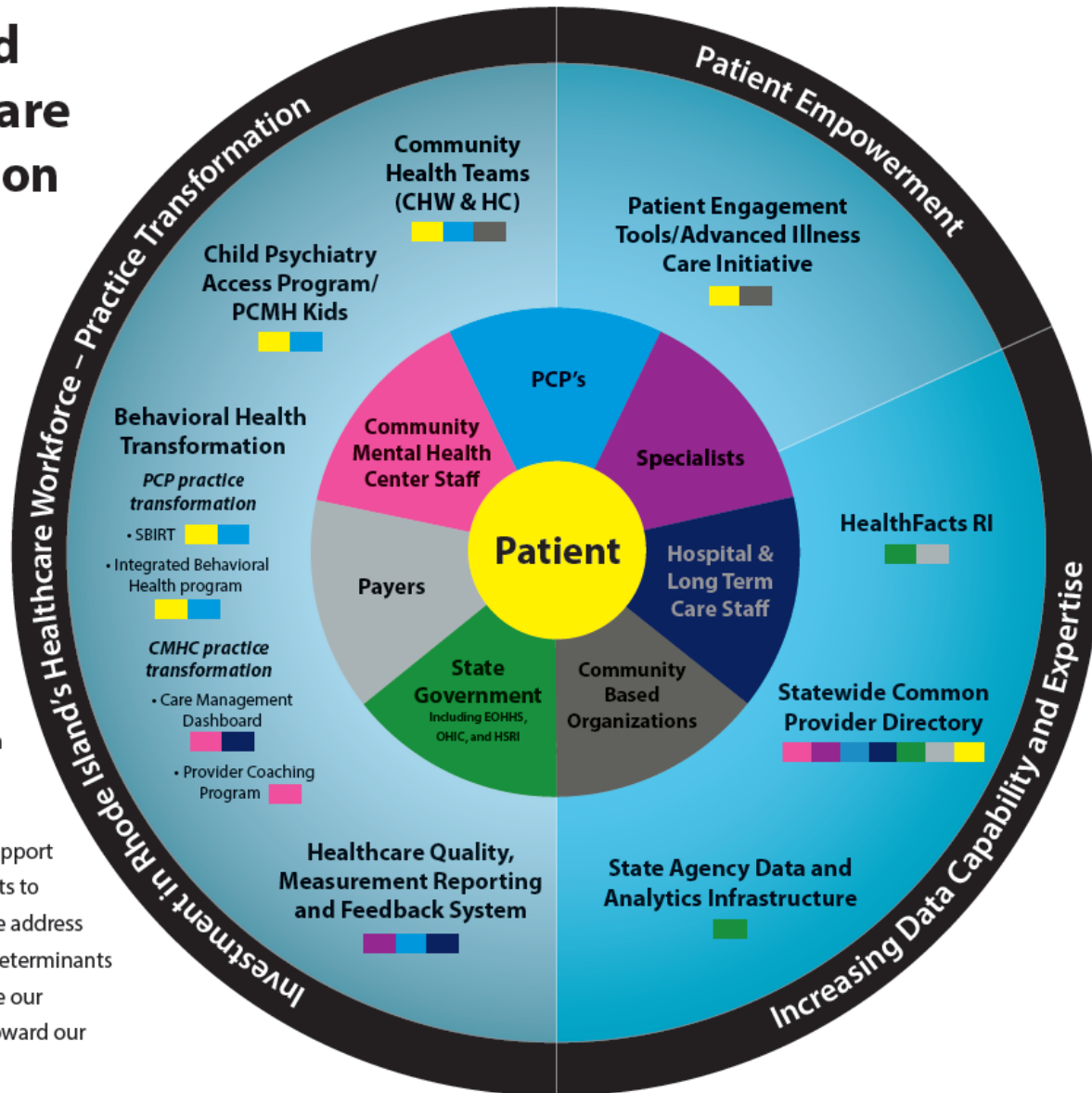
Rhode Island SIM Healthcare Transformation Project

as of Feb 12, 2016

RI SIM THEORY OF CHANGE-

Rhode Island's payment system is changing to focus more on value and less on volume.

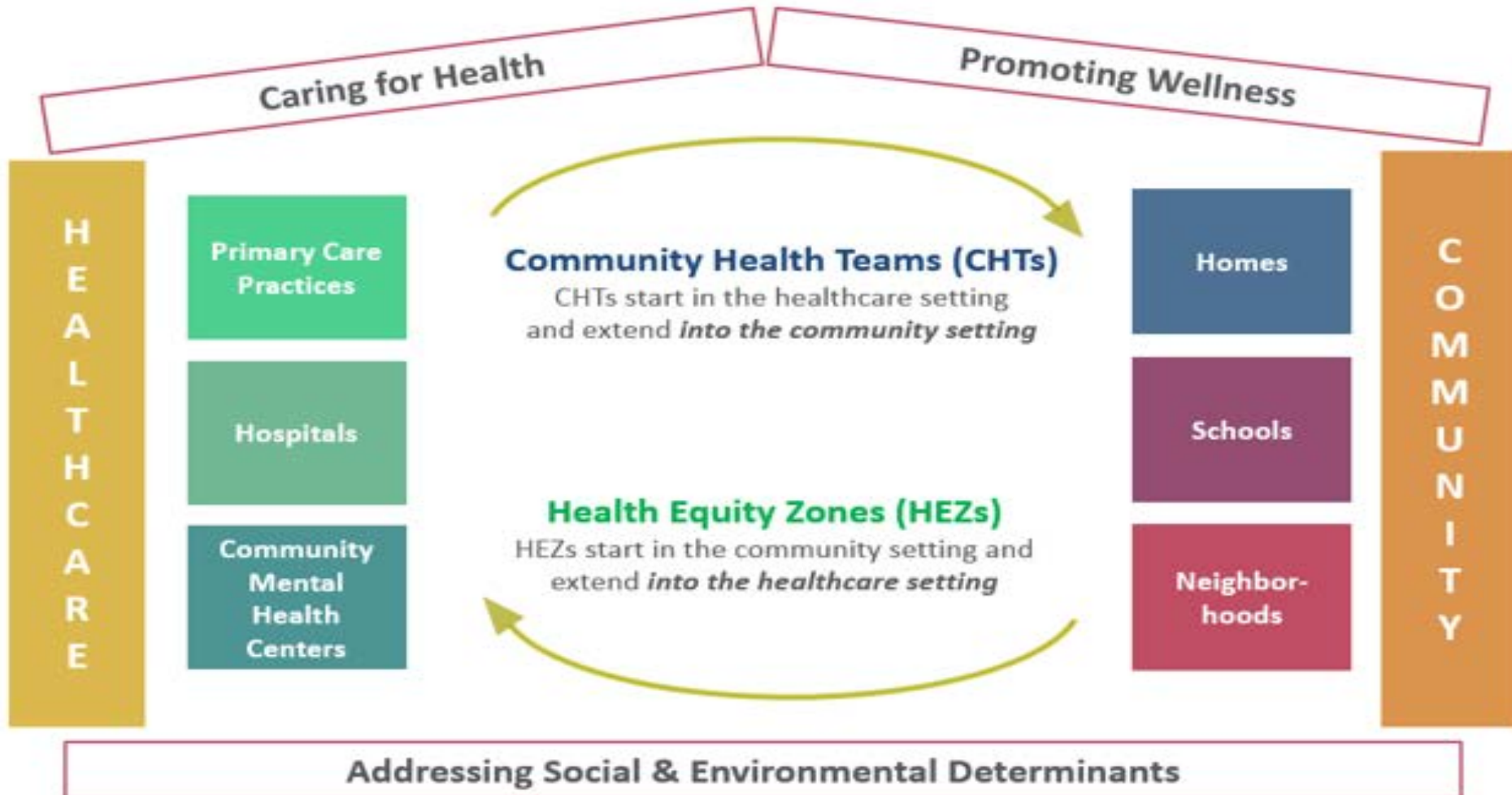
IF SIM makes investments to support providers and empower patients to adapt to these changes, and we address the social and environmental determinants of health, THEN we will improve our Population Health and move toward our vision of the Triple Aim.



Transforming Practices with CHWs



SIM Community Health Teams: A Community-Clinical Linkage



RIDOH Academic Center: Mission & Vision



Mission:

Strengthen the integration of scholarly activities within public health policy & practice by instilling a culture of learning to support RIDOH's Leading Priorities.



Vision:

Achieve excellence in public health policy & practice through academic collaborations & a multidisciplinary approach to public health in Rhode Island.



What is an Academic Health Department?

- A teaching health department that establishes formal affiliations between academic institutions & a public health organization
- Designed to enhance public health education, research, & service through facilitated collaboration between academic institutions & public health departments
- Designated through the Public Health Foundation, Council on Linkages Between Public Health & Academia since 2015



www.health.ri.gov

Nicole Alexander-Scott, MD, MPH

Director of Health

Rhode Island Department of Health

Nicole.AlexanderScott@health.ri.gov