

Connecting Public Health and Food Sector Collaborators: Reducing Sodium through Meal and Menu Modifications

December 8, 2016

11 AM – 12:30 PM Pacific

2 PM – 3:30 PM Eastern

Please close all applications except WebEx.

Audio difficulties? Send us a question in the **Q&A** panel.

Technical difficulties? Call WebEx at **1-866-229-3239**.

Connect with us: **Twitter** [@Dialogue4Health](https://twitter.com/Dialogue4Health) | **#ReduceSodium**

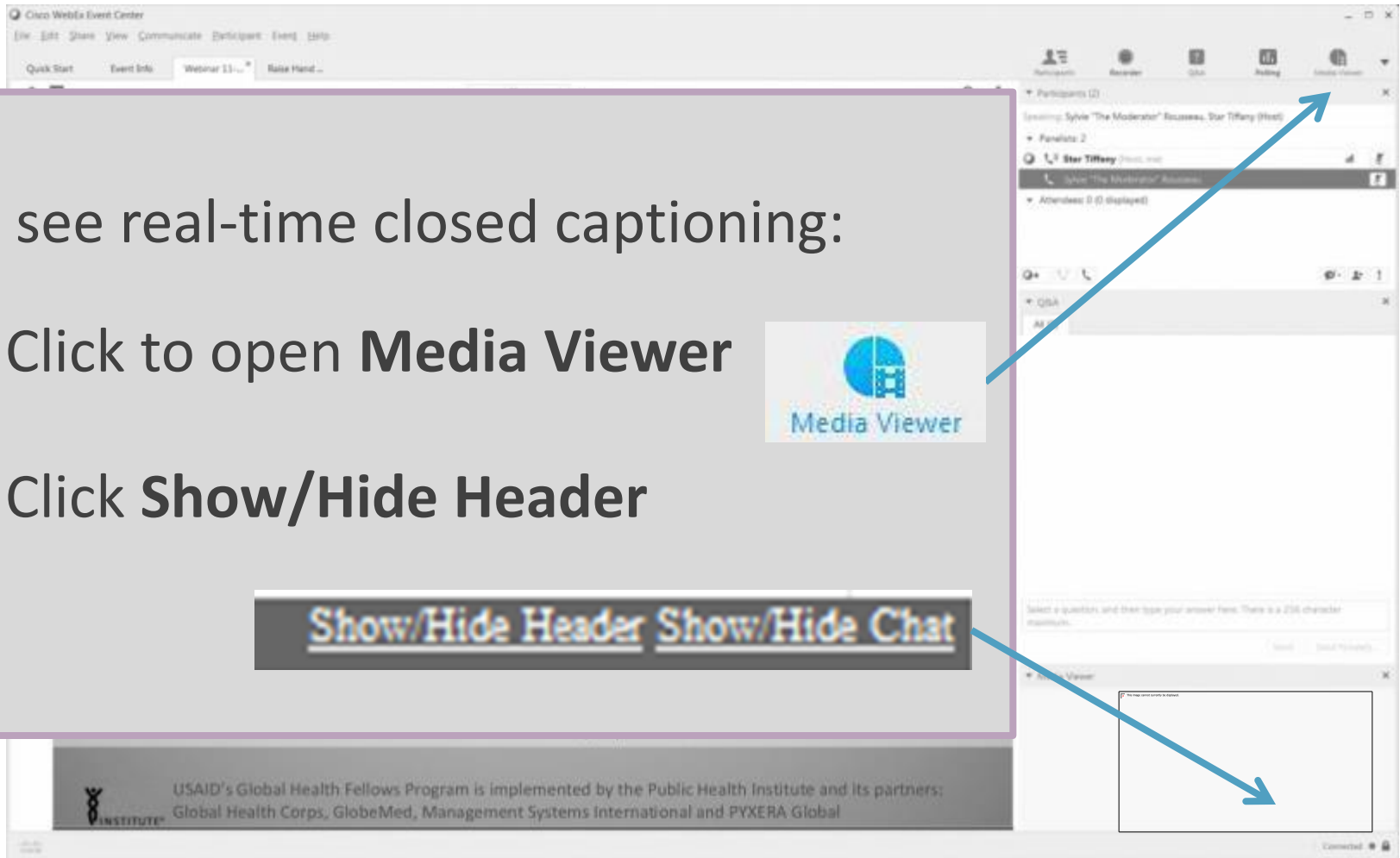
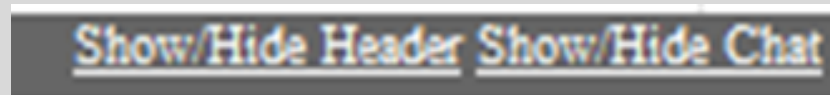
Closed Captioning

To see real-time closed captioning:

1. Click to open **Media Viewer**

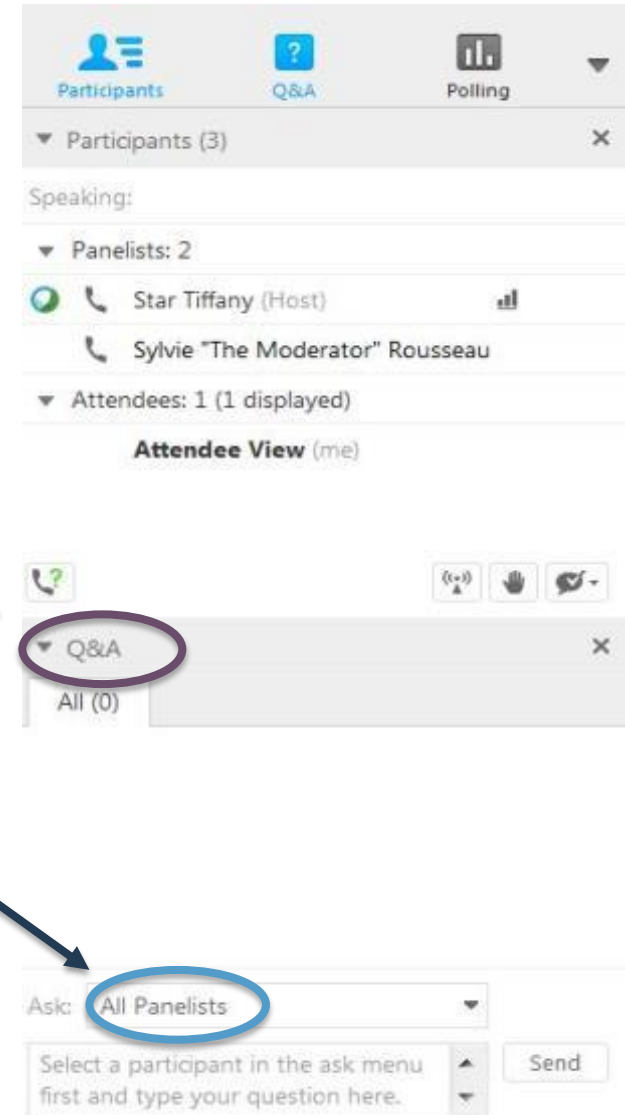


2. Click **Show/Hide Header**



Q&A Feature

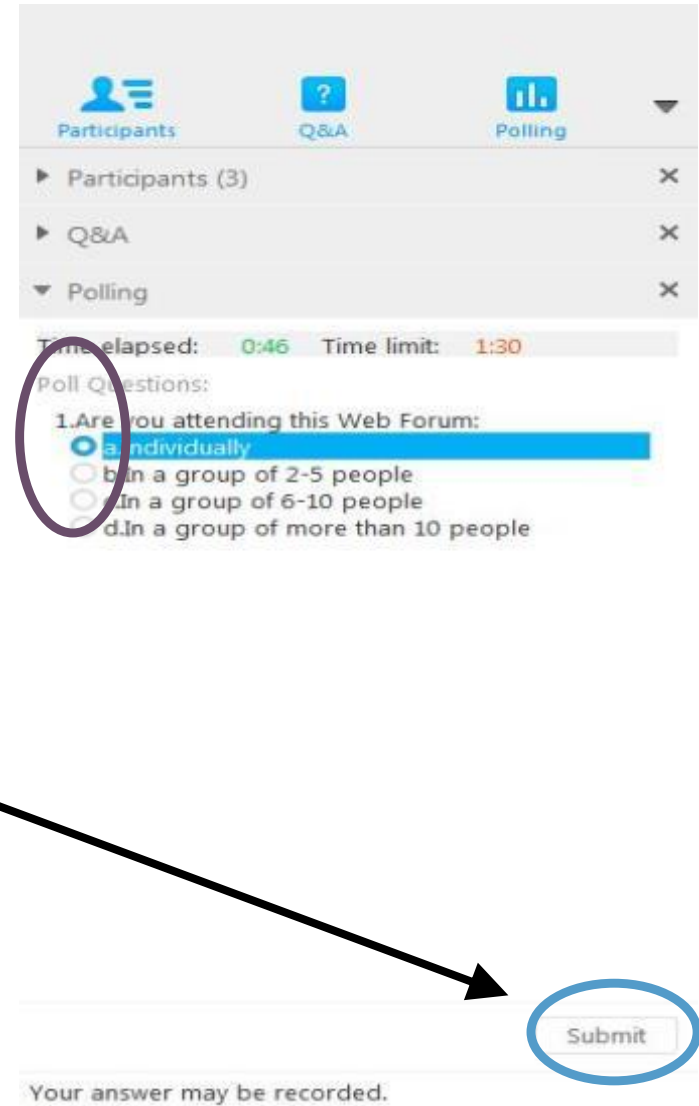
1. Type your question in the **Q&A box**
2. Select **Ask: All Panelists**
3. Send



Polling Feature

Please:

1. Choose your **answer**
2. Click **Submit**



The screenshot shows a web interface with a top navigation bar containing three icons: 'Participants' (a person icon), 'Q&A' (a question mark icon), and 'Polling' (a bar chart icon). Below the navigation bar is a list of active features: 'Participants (3)', 'Q&A', and 'Polling'. The 'Polling' section is expanded, showing a timer with 'Time elapsed: 0:46' and 'Time limit: 1:30'. Below the timer is the text 'Poll Questions:' followed by a question: '1. Are you attending this Web Forum:'. There are four radio button options: 'a. Individually' (which is selected and highlighted in blue), 'b. In a group of 2-5 people', 'c. In a group of 6-10 people', and 'd. In a group of more than 10 people'. At the bottom right of the poll area is a 'Submit' button, which is circled in blue. Below the poll area, there is a small text box that says 'Your answer may be recorded.'

Poll #1

Are you attending this Web Forum:

- a) Individually
- b) In a group of 2-5 people
- c) In a group of 6-10 people
- d) In a group of more than 10 people



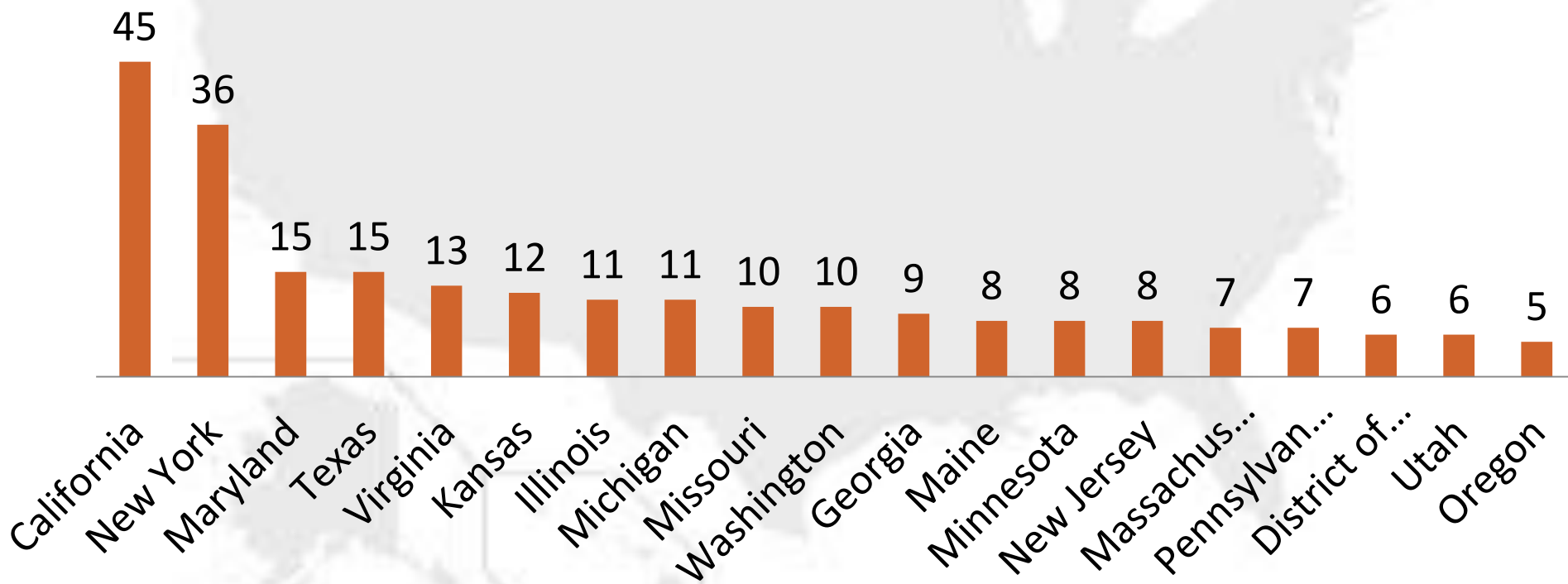
Kelly Hughes, MPH, RD, CHES

Associate Director of Program Strategy
National Network of Public Health Institutes

Website: www.nnphi.org

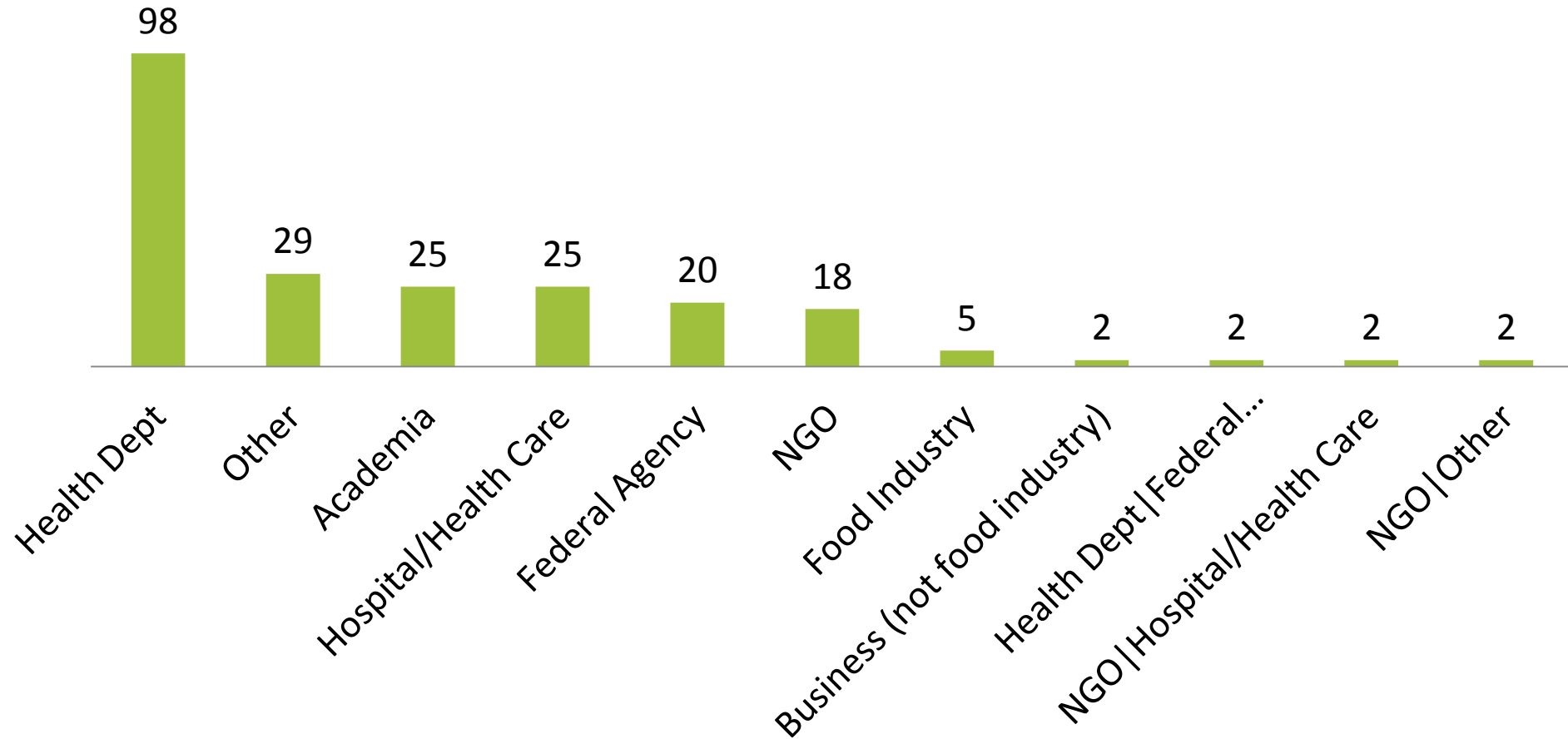
About the Audience: Where You Are

- In 44 US states, Washington DC, Puerto Rico, Australia, and Trinidad and Tobago
- These states have at least 5 audience members:



About the Audience: Work Sectors

Two or more registrants work for:





Brad Barnes, CMC, CCA, AAC

Director

CIA Consulting and Industry Programs

Website: www.ciachef.edu



Nicole King

Healthy Foodservice Coordinator
EMHS Community Health & Grants

Website: www.emhs.org



Sarah Masoni

Senior Faculty Research Assistant I and Food
& Process Development Team Manager
Food Innovation Center
Oregon State University

Website: fic.oregonstate.edu



Jason Ball

Faculty Research Assistant and Research
Chef

Food Innovation Center
Oregon State University

Website: fic.oregonstate.edu



Ann Colonna, MS

Senior Faculty Research Assistant I and
Sensory Program Manager
Food Innovation Center
Oregon State University

Website: fic.oregonstate.edu

Thank you to our moderator and presenters:



**Kelly
Hughes**



**Brad
Barnes**



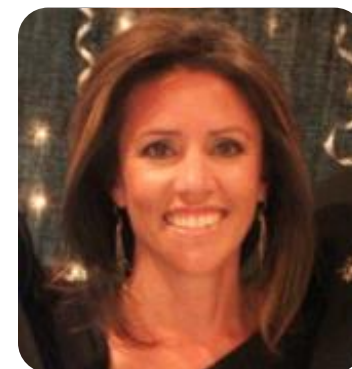
**Nicole
King**



**Sarah
Masoni**

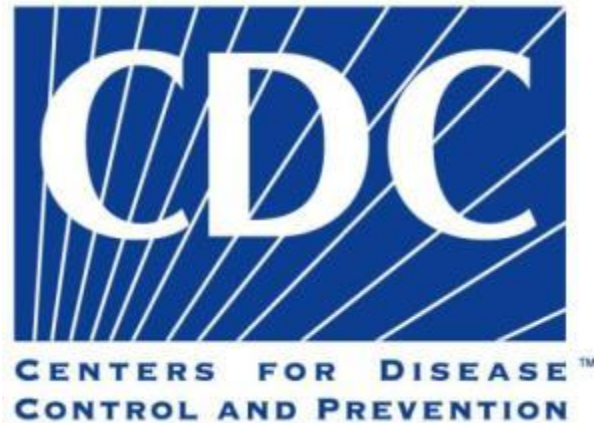


**Jason
Ball**



**Ann
Colonna**

Thank you!



Connecting Public Health and Food Sector Collaborators: Reducing Sodium through Meal and Menu Modifications

Thank you for joining our Web Forum!

The **Recording** and **Slides** will be available at
www.Dialogue4Health.org

Join the **Dialogue4Health LinkedIn Group** at
tinyurl.com/D4HGroup
