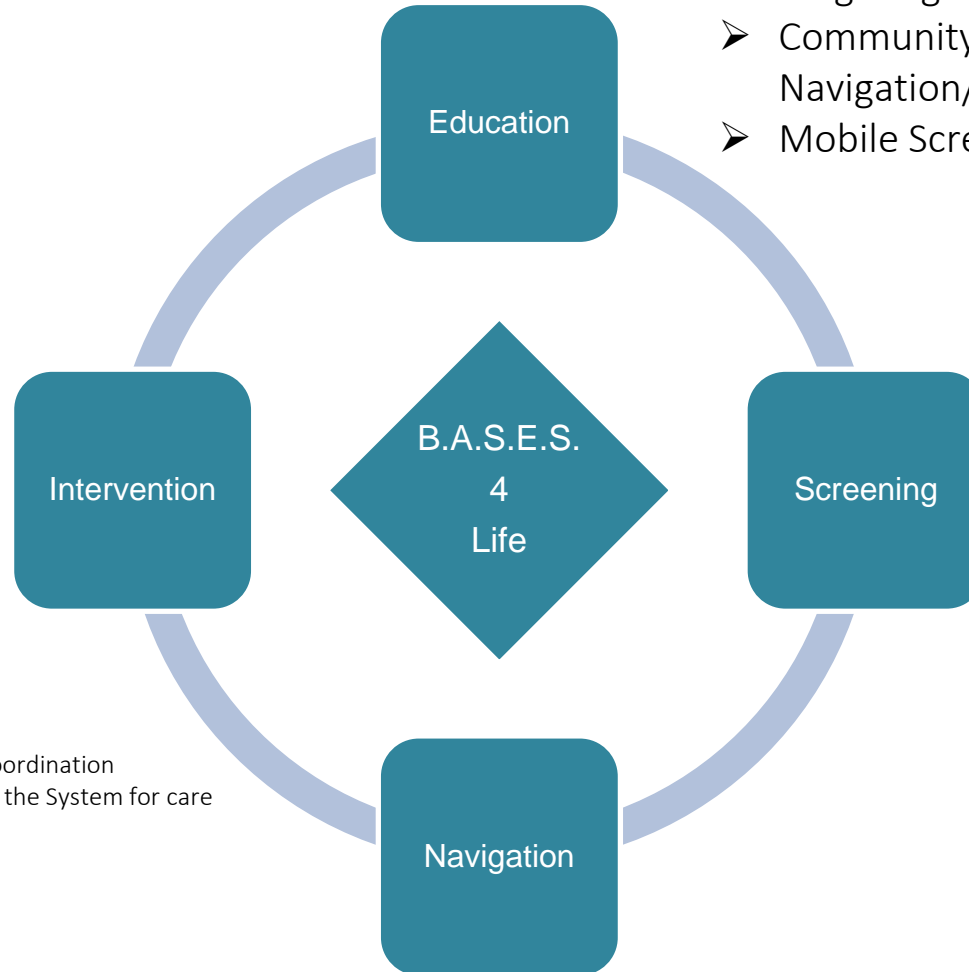


# Lung B.A.S.E.S. 4 Life Program

**B-** Bringing  
**A-** Awareness  
**S-** Screening  
and  
**E-** Education  
to improve  
**S-** Survival

- Targeting the Underserved
- Community Navigation/Education
- Mobile Screening Component



The number 4 represents our 4 key strategies:

- ❖ Community-based education
- ❖ Mobile/Regional screening 25 sites
- ❖ Community Navigator for education/care coordination
- ❖ Navigator to transition positive screens into the System for care and clinical intervention

# Program Development



LEVINE CANCER INSTITUTE

# Networking and Education



# Challenges



LEVINE CANCER INSTITUTE

# Impact



LEVINE CANCER INSTITUTE