

# *Partnerships to Improve Population Health*

Gretchen Hammer  
Health Programs Office Director/Medicaid Director  
Colorado Department of Health Care Policy and  
Financing



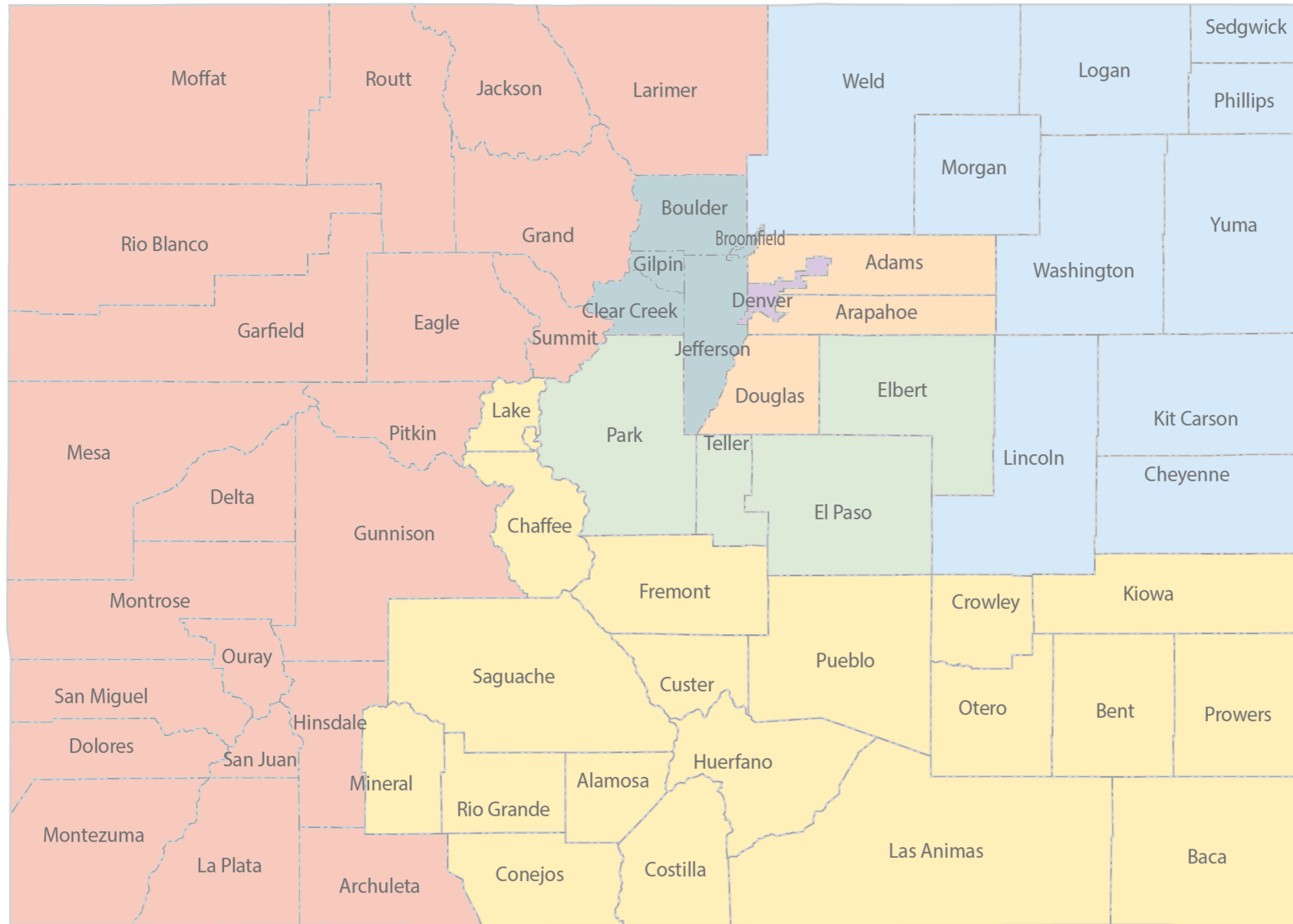
**COLORADO**

Department of Health Care  
Policy & Financing

# State of Health



# Colorful Colorado



# Medicaid Population

Approximately 74% of adults on Medicaid are working



Drivers



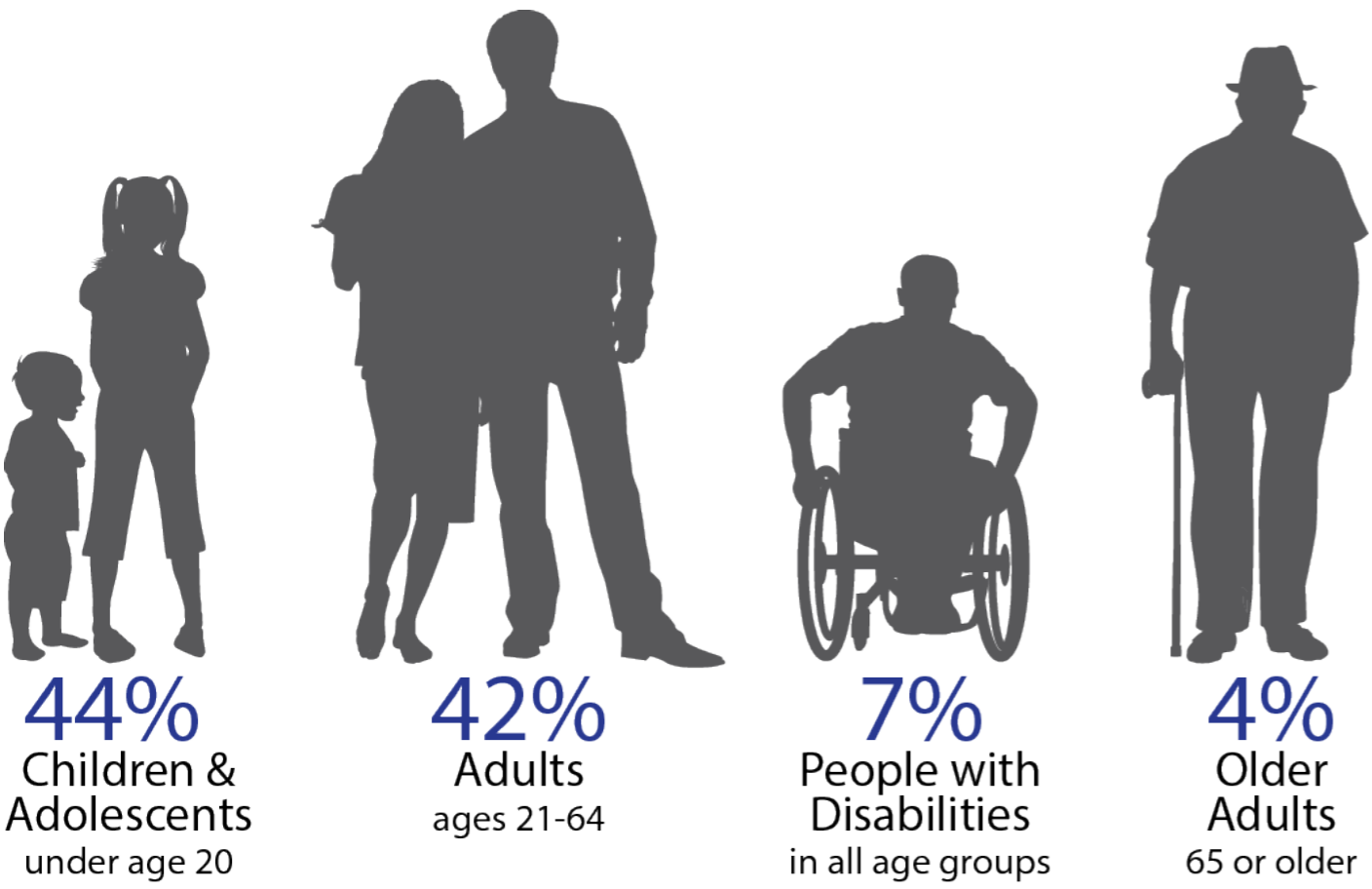
Child care workers



Waiters & waitresses



Cashiers



## FY 2014-15 Medicaid Caseload

Federal Poverty Levels by Family Size		
	Family of 1	Family of 4
133%	\$15,654	\$32,252
260% (CHP +)	NA	\$60,625

\*Some earning more may still qualify.

# *Performance Plan*

- Delivery System Innovation
- Tools of Transformation
- Partnerships to Improve Population Health
- Operational Excellence

# ***Population Health***

**64** Counties – **54** Local Public Health Agencies  
– **21** Health Statistics Areas – **7** RCCOs –  
**5** BHOs – **4** State Agencies – **1** SIM Grant

## **CDC 6-18 Initiative**

- Tobacco Cessation
- Reduction of Unintended Pregnancies

# *Partnerships*

State agencies must model effective partnerships and leverage unique strengths of each agency

Shared metrics bring together powerful new partnerships to improve health

Contract requirements can support (nudge) new relationships

All work to improve population health must align with and/or come from local community priority