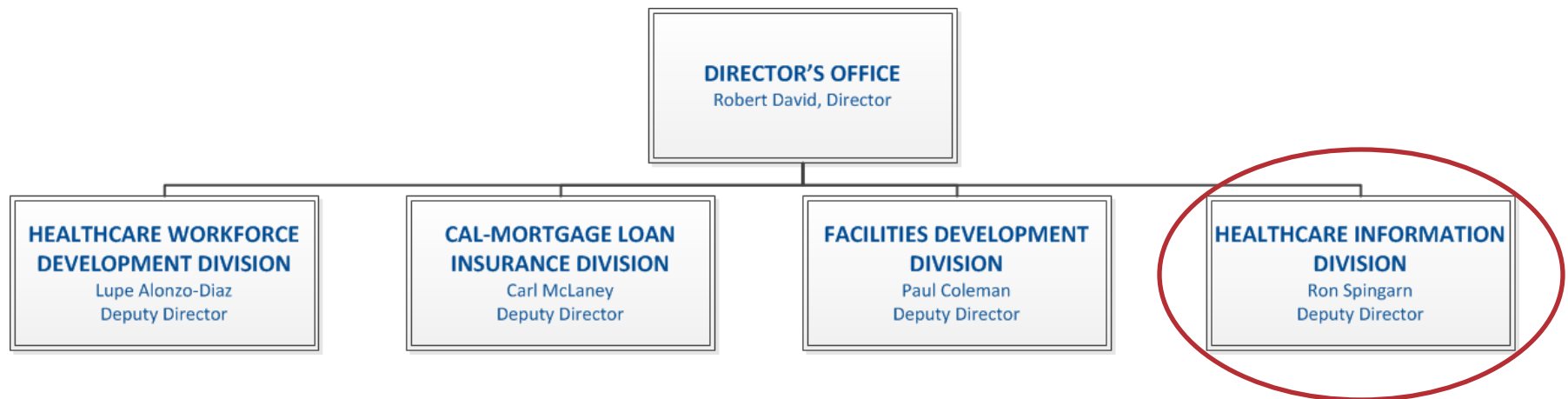


# Using OSHPD Data to Track the Impact of the ACA on the Hospital Safety Net

**Robert David, Director**  
**Office of Statewide Health Planning and Development**

*December 11, 2012*

# OVERVIEW: Office of Statewide Health Planning and Development



## Licensed Healthcare Facilities Reporting to OSHPD

### *1. Hospitals*

- General Acute Care
- Acute Psychiatric
- Psychiatric Health Facility
- Chemical Dependency Recovery
- Special

### *2. Long Term Care Facilities*

- Skilled Nursing Facility
- Intermediate Care Facility (ICF)
- ICF/Developmentally Disabled
- Congregate Living Health Facility

### *3. Primary Care Clinics*

- Community
- Free

### *4. Specialty Clinics*

- Alternative Birthing Centers
- Dialysis
- Psychology
- Rehabilitation
- Surgical

### *5. Home Health Agencies & Hospices*

## OSHPD Healthcare Facility Data Collection Programs

DATA COLLECTION PROGRAM	HOSPITAL	LONG TERM CARE	CLINIC		HOME HEALTH & HOSPICE	OTHER
			Primary Care	Specialty		
1. Annual Financial Disclosure	■	■				
2. Quarterly Financial Disclosure	■					
3. Inpatient Discharges	■					
4. Emergency Department Encounters	■					
5. Ambulatory Surgery Encounters	■			■ <sup>1</sup>		■ <sup>2</sup>
6. Coronary Artery Bypass Graft	■					
7. Annual Utilization	■	■	■	■	■	
8. Community Benefits Plans	■					
9. Chargemasters	■					
10. Fair Pricing Policies	■					

<sup>1</sup>Surgical clinics only

<sup>2</sup>Physician owned/operated ambulatory surgery centers



## Frequency of Reporting – OSHPD Healthcare Facility Data

DATA COLLECTION PROGRAM	QUARTERLY	SEMI-ANNUAL	ANNUAL	BIENNIAL
1. Annual Financial Disclosure			■ <sup>1</sup>	
2. Quarterly Financial Disclosure	■			
3. Inpatient Discharges		■		
4. Emergency Department Encounters	■			
5. Ambulatory Surgery Encounters	■			
6. Coronary Artery Bypass Graft		■		
7. Annual Utilization			■	
8. Community Benefits Plans			■ <sup>1</sup>	
9. Chargemasters			■	
10. Fair Pricing Policies				■

<sup>1</sup> Facility Fiscal Year



## Type of Healthcare Facility Data Reported to OSHPD

DATA COLLECTION PROGRAM	SERVICES INVENTORY	FINANCIAL	UTILIZATION	PATIENT		OTHER <sup>2</sup>
				Individual	Aggregate	
1. Annual Financial Disclosure	■	■	■		■	■
2. Quarterly Financial Disclosure	■	■	■		■	■
3. Inpatient Discharges		■	■	■		■
4. Emergency Department Encounters		■	■	■		■
5. Ambulatory Surgery Encounters		■	■	■		■
6. Coronary Artery Bypass Graft			■	■		■
7. Annual Utilization	■	■	■		■ <sup>1</sup>	■
8. Community Benefits Plans		■				■
9. Chargemasters		■				■
10. Fair Pricing Policies		■				■

<sup>1</sup> Hospitals do not report patient data

<sup>2</sup> For example, facility name, address, ownership, etc.



## Number of Healthcare Facilities Reporting to OSHPD, 2011

DATA COLLECTION PROGRAM	HOSPITAL	LONG TERM CARE	CLINIC		HOME HEALTH & HOSPICE	OTHER	TOTAL
			Primary Care	Specialty			
1. Annual Financial Disclosure	442	1,198					1,640
2. Quarterly Financial Disclosure	442						442
3. Inpatient Discharges	442						442
4. Emergency Department Encounters	324						324
5. Ambulatory Surgery Encounters	373			36		33	442
6. Coronary Artery Bypass Graft	121						121
7. Annual Utilization	509	1,199	1,085	545	1,928		5,266
8. Community Benefits Plans	219						219
9. Chargemasters	413						413
10. Fair Pricing Policies	403						403

## OSHPD Healthcare Data Products (100+)

- Hospital Outcome Reports:  
CABG Surgery, Heart Attacks, ICU, Community-Acquired Pneumonia
- Racial and Ethnic Disparities in Healthcare
- Preventable Hospitalizations
- AHRQ Quality Indicators:  
Inpatient Mortality, Patient Safety, Pediatric, Prevention
- Financial and Utilization Trends by Facility Type
- Hospital Patient Origin and Market Share
- Common Surgeries and Charges Comparison
- Healthcare Atlas



## Basic Principles: User-Driven OSHPD Data Products

