

# *Promoting Health Equity: Show Me the Money – Innovative Funding Approaches to Promote Health Equity*

## **Equality**



## **Equity**



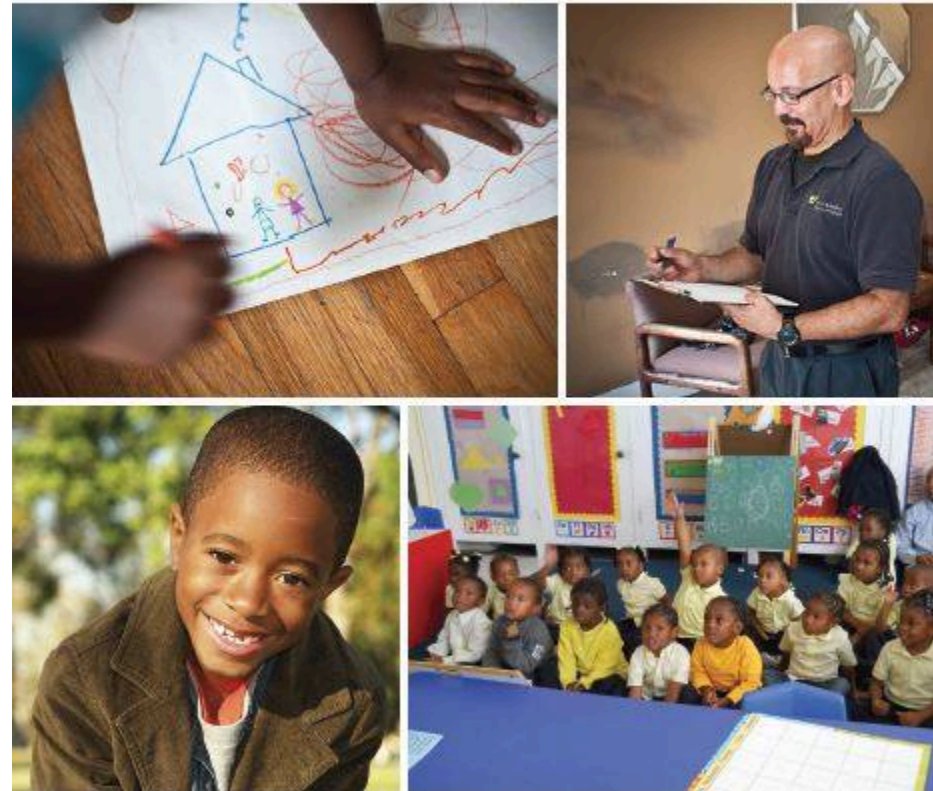
*Promoting Health Equity: Show Me the Money – Innovative Funding Approaches to Promote Health Equity*

## **Green & Healthy Homes Initiative**

**NEW JERSEY LEAD POISONING  
PREVENTION ACTION PLAN**



**Green & Healthy  
Homes Initiative®**



*Promoting Health Equity: Show Me the Money – Innovative Funding Approaches to Promote Health Equity*

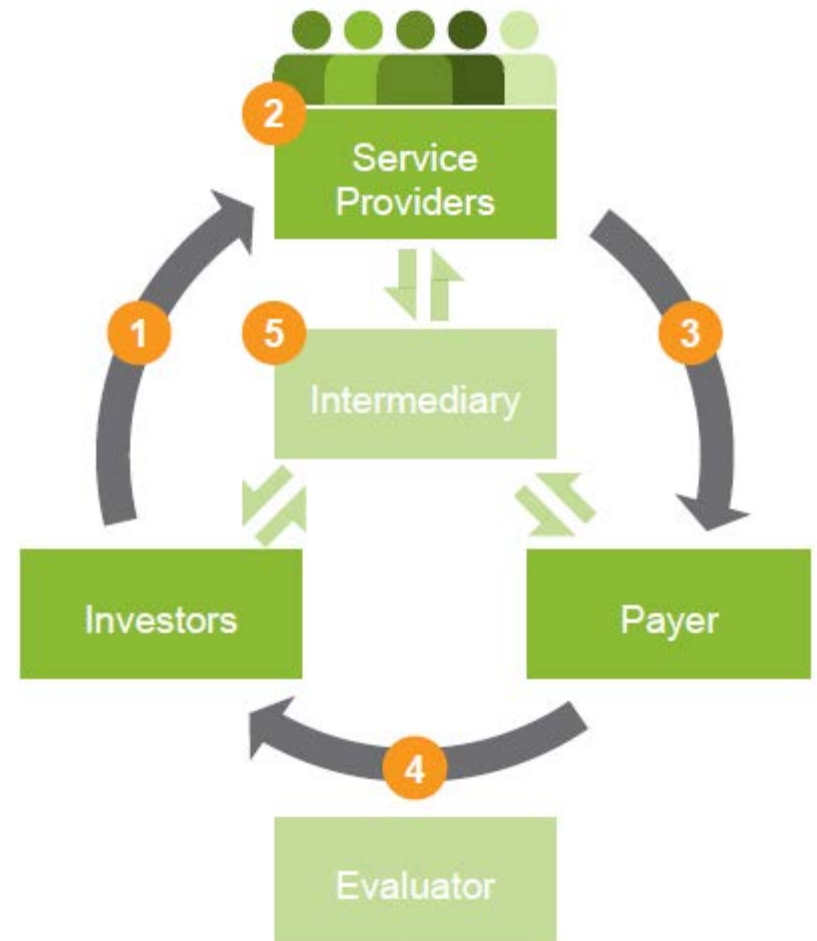
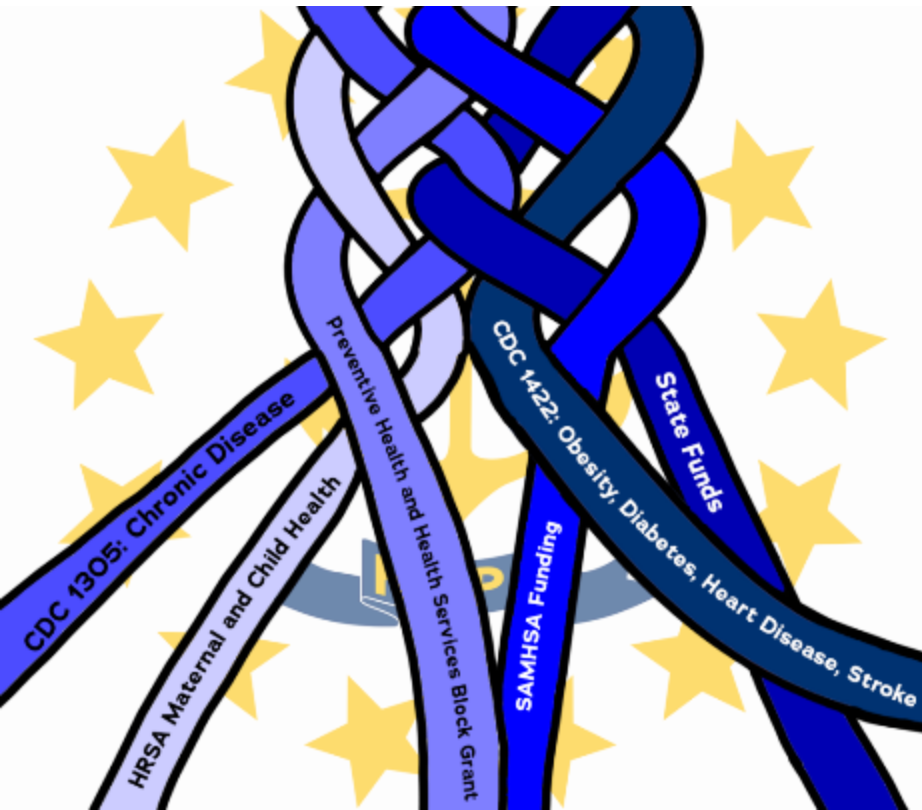
## Health Equity Zones



**HEALTH EQUITY IN ACTION:**  
JUSTICE AND HEALTH FOR ALL

*Promoting Health Equity: Show Me the Money – Innovative Funding Approaches to Promote Health Equity*

## Funding



# Aligning, braiding, and coordinating resources to advance healthy homes.



- Single Intake System
- Comprehensive Assessment
- Coordinated Services
- Integrated Interventions
- Cross-Trained Workers
- Shared Data

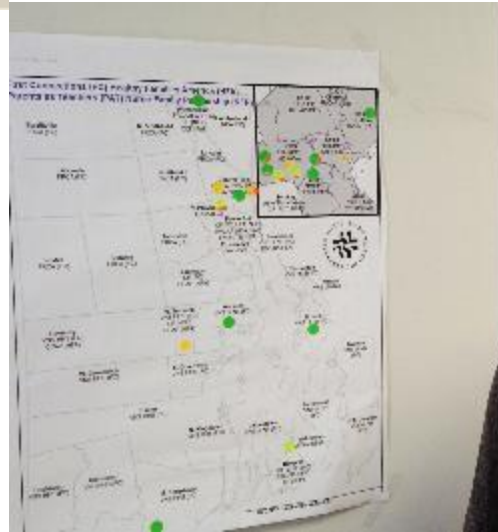


- ✓ Lead Hazard Reduction
- ✓ Asthma Trigger Control
- ✓ Fall/Injury Prevention
- ✓ Energy Efficiency
- ✓ Weatherization

Innovative social impact finance models to recapture savings for reinvestment

*Promoting Health Equity: Show Me the Money -- Innovative Funding Approaches to Promote Health Equity*

## **Providing Leadership**



*Promoting Health Equity: Show Me the Money – Innovative Funding Approaches to Promote Health Equity*

## **Overcoming Obstacles**



*Promoting Health Equity: Show Me the Money – Innovative Funding Approaches to Promote Health Equity*

## **Engaging Community Partners**





*Promoting Health Equity: Show Me the Money – Innovative Funding Approaches to Promote Health Equity*

## Measuring Program Impact

# HEALTH EQUITY ZONES

Building healthy and resilient communities across Rhode Island



**Join us for the next web forum of the series**

**Taking Action to Promote Health Equity Series: Breaking  
Outside of the Box - Innovative Collaborations**

October 16, 2018

11:30 AM to 1 PM Pacific / 2:30 PM to 4 PM Eastern